



Ref: CM2011

TAMARIU

9015-2319064/2023

DESCRIPTION

Magnificent penthouse located in a quiet residential with community pool in Tamariu. The penthouse has a living room with access to an impressive big terrace (30 m2) with sea views, a large fully equipped kitchen with a dining area and three bedrooms en suite (two with doublebeds and one with two single beds), one of which has an access to the terrace. Outside parking Community pool Capacity: 6 people

General

Type of Property: **Apartment** m2: **88**
 m2 plot: **0** Distance from the beach:
 Year of construction: Type of pool: **Communal**
1971
 Views: **Seaview**

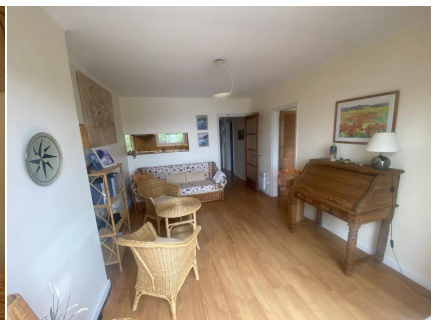
Characteristics

Number of rooms: 3	Toilets: 0	Bathrooms with bathtub: 1
Bathrooms with shower: 2	Double beds: 2	Single beds: 2
Bunk beds: 0	Cribs: 0	Sofa beds: 0
Type of kitchen:		

Other Features

Terrace Parking

Equipment



■ C O R R E D O R M A T Ó ■

REAL ESTATE & PROPERTY MANAGEMENT
IMMOBILIÀRIA & ADMINISTRACIÓ DE FINQUES

Season

Price

Minimum stay